

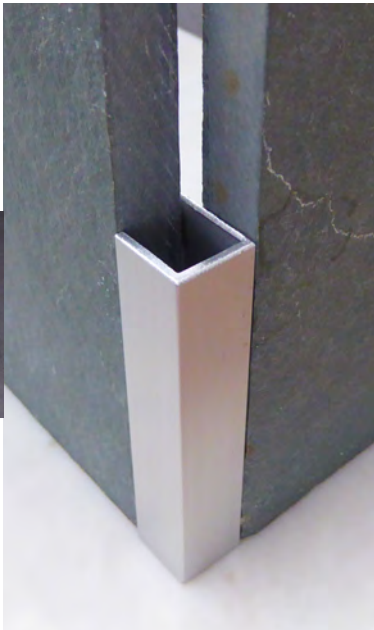
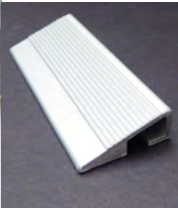
Ceramic Tool Company



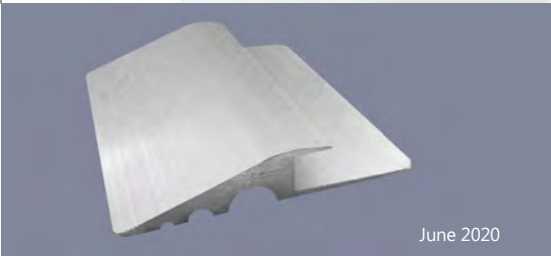
Our Experience. Your Success.



ceramictool.com



800.236.5230



June 2020



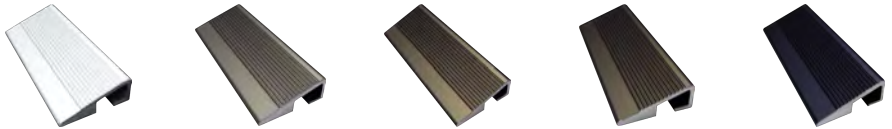
Solutions with Metal Trims

CTC Trims & Transitions

Ceramic Tool Company has been around for over 35 years, manufacturing a line of metal trims that solve project applications simply, without labor intensive complications. The CTC advantage is our experience and our resolve to make your project a success.

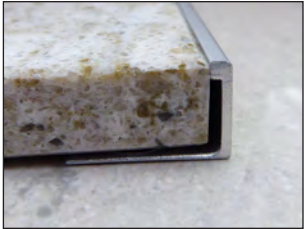
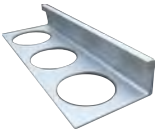
We make time for you. We are careful and ask questions. We ship quickly. Our goal is to guarantee our customers - they are working with the best.

ANODIZING

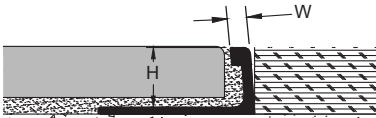


Anodizing is a process which thickens the natural oxide on aluminum. A direct electrical current is passed through a bath of sulfuric acid, producing a film that resists scratches and basic wear and tear.





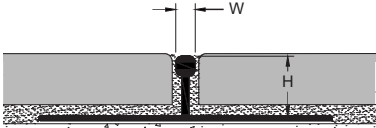
EDGE



H	W	PRODUCT CODE
1/4"	1/8"	CTC 14
11/32"	1/8"	CTC 1132
3/8"	1/8"	CTC 38
7/16"	1/8"	CTC 716
1/2"	1/8"	CTC 12
5/8"	1/8"	CTC 58
3/4"	1/8"	CTC 34
7/8"	1/8"	CTC 78



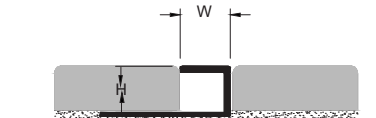
BAR



H	W	PRODUCT CODE
3/16"	1/8"	CTC 316 T
3/8"	1/8"	CTC 38 T



SQ



H	W	PRODUCT CODE
7/16"	1/2"	CTC 12 SQ



All CTC Products are available in 94" lengths.

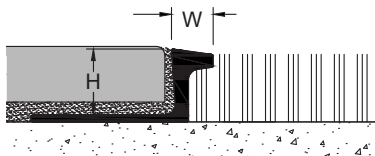
CTC Carpet Trims

CTC Carpet Trims began as a metal transition for tile that stopped the carpet from fraying. Now our trim designs encompass all types of flooring, and all types of applications.



CT

Installed to protect the edge of carpet with a 1/4" reveal.

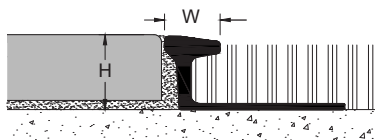


H	W	PRODUCT CODE
1/4"	1/4"	CTC 14 CT
11/32"	1/4"	CTC 1132 CT
3/8"	1/4"	CTC 38 CT
7/16"	1/4"	CTC 716 CT
1/2"	1/4"	CTC 12 CT



BCT

Used to protect carpet installed against existing tile with the same 3/8" reveal as our MCT.



H	W	PRODUCT CODE
1/4"	3/8"	CTC 14 BCT
11/32"	3/8"	CTC 1132 BCT
7/16"	3/8"	CTC 716 BCT



CTB

Fulfills the same function as our BCT, with 1/4" reveal.



H	W	PRODUCT CODE
3/8"	1/4"	CTC 38 CTB

All CTC Products are available in 94" lengths.



MCT

Modified to have the same 3/8" reveal shape as our BCT to match existing installations.

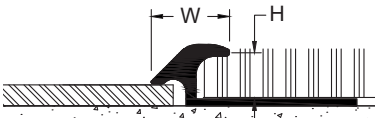


H	W	PRODUCT CODE
3/8"	3/8"	CTC 38 MCT
7/16"	3/8"	CTC 716 MCT



CTV

Designed primarily, but not exclusively, for soft surface transitions.

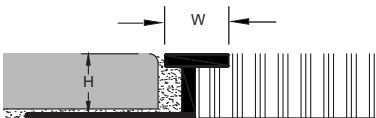


H	W	PRODUCT CODE
1/4"	7/16"	CTC 14 CTV



CAT

This reveal's overhang works best for same level floor installations.

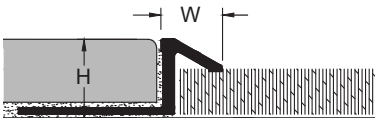


H	W	PRODUCT CODE
1/4"	3/8"	CTC 14 CAT
11/32"	3/8"	CTC 1132 CAT
7/16"	7/16"	CTC 716 CAT



CTS

The deeper 3/8" wide slope accommodates level changes in the floor.

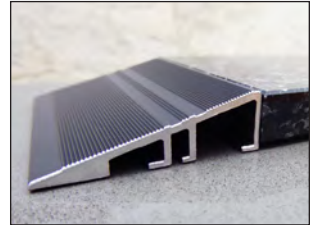


H	W	PRODUCT CODE
3/8"	3/8"	CTC 38 CTS
7/16"	3/8"	CTC 716 CTS



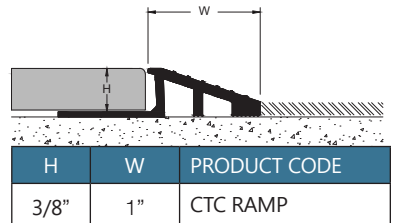
CTC Reducers

CTC offers the contractor ADA compliant reducers to make their project a success. Whether you have existing hard flooring or new construction, CTC Reducers provide the solution.

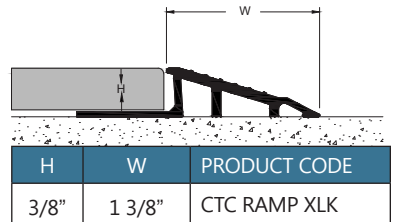


CTC Ramp

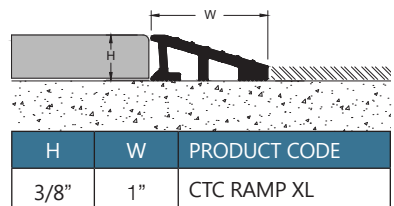
Ramp



CTC Ramp XLK



CTC Ramp XL

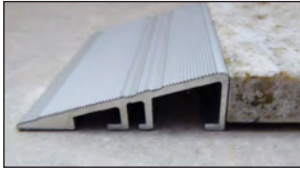


All CTC Products are available in 94" lengths.

800-236-5230

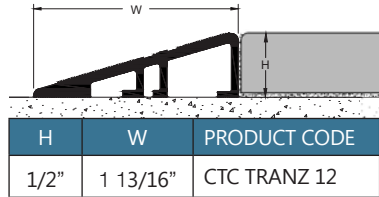


Ceramic
Tool
Company

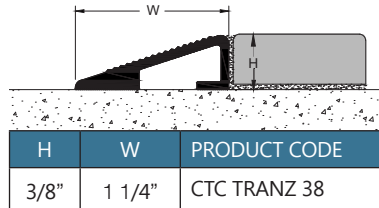


Tranz

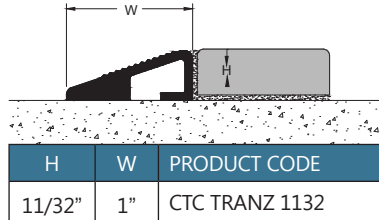
With no anchoring leg, this reducer is perfect for commercial projects with existing tile.



All of our Tranz reducers are ADA compliant, and have anti-slip tread lines.

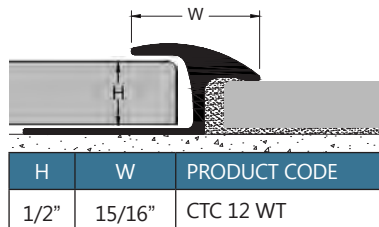


You can glue down our CTC Tranz with construction adhesive or mechanically fasten in the field.

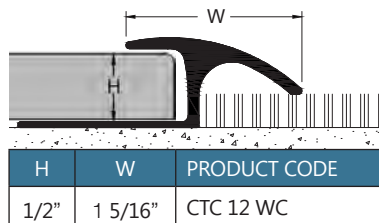


WT

The more durable design of these reducers works well with a heavier duty application.



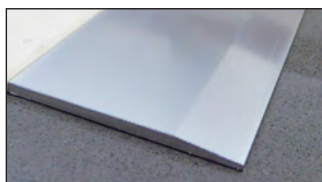
WC





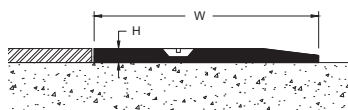
Soft Surface Trims

CTC has designed a line of attractive metal trims to be used primarily for soft surface floors. Applications include reduction to concrete, carpet edge protection, and varied level transitions.



Reducer

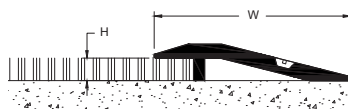
CTC 18 Reducer is available with or without pre-drilled holes for mechanical install.



H	W	PRODUCT CODE
1/8"	2"	CTC 18 REDUCER



CTC 316 Reducer is available with or without pre-drilled holes for mechanical install.



H	W	PRODUCT CODE
3/16"	1 3/4"	CTC 316 REDUCER



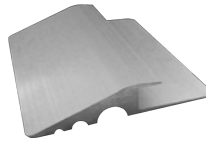
CTC 14 Reducer has an anchoring leg that tapers down to avoid the need for flashing.



H	W	PRODUCT CODE
1/4"	1 5/16"	CTC 14 REDUCER

All CTC Products are available in 94" lengths.

800-236-5230

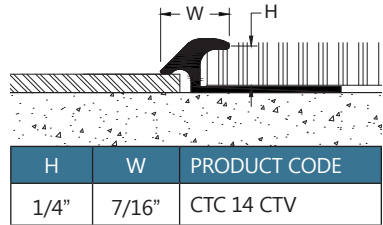


**Ceramic
Tool**
Company



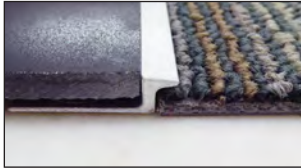
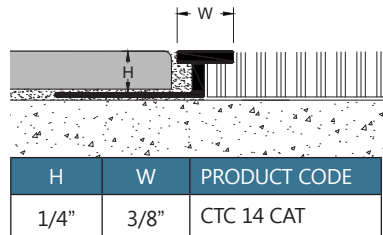
CTV

Designed primarily, but not exclusively, for soft surface transitions.



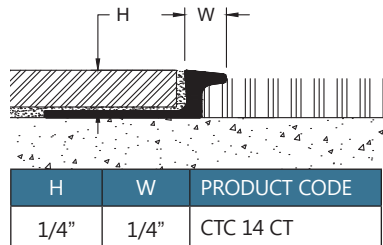
CAT

This reveal's overhang works best for same level floor installations.



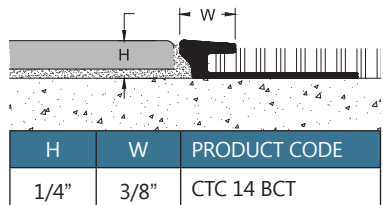
CT

The 1/4" reveal slopes for a gradual transition between different levels.



BCT

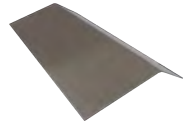
Used to protect carpet installed against existing tile using 3/8" reveal.



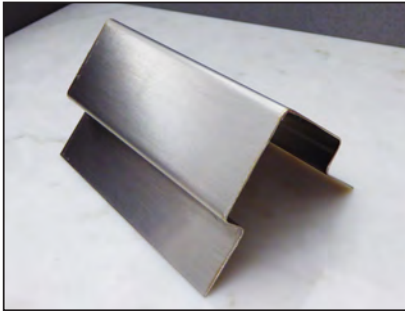
In addition to the products on these pages, CTC offers a wide variety of metal transition designs, with different heights and finishes. Please call us if your job criteria requires a different solution, and we'll find it for you!



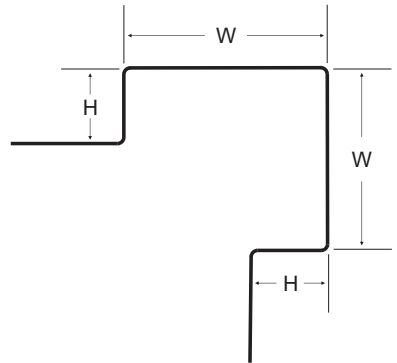
Custom Stainless Steel



CTC has the capability to create numerous shapes with stainless steel, in brushed or mirror polished finishes. You provide the design, we bend it into reality.



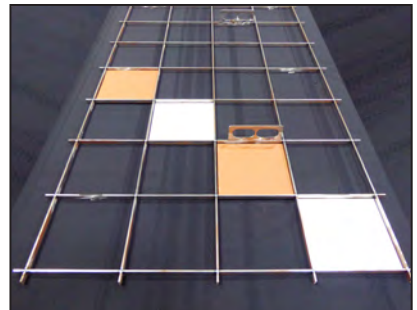
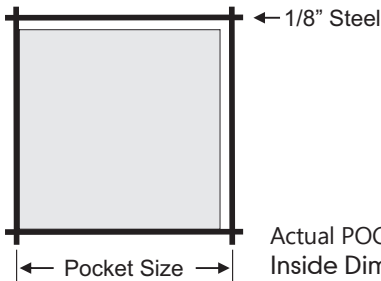
You determine the "H" and the "W," the gauge of the stainless steel, and the finish.



Custom Stainless Steel available up to 10' lengths.

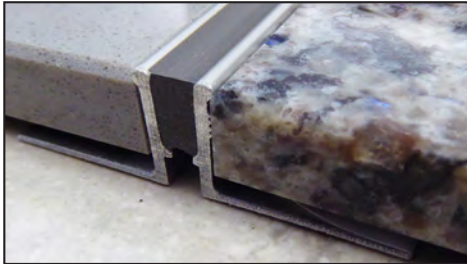
Tile Setting Frames

CTC's tile racks are available in custom shapes and sizes.



Expansion Joint

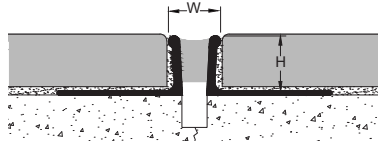
800-236-5230



CTC Joints are pre-molded caulk joints designed to use over control and cold joints in any area subject to foot or light vehicle traffic. The CTC Joint is manufactured using anodized aluminum and a two part chemical cure self-leveling sealant.

- Fully cured upon installation
- Tile edge protected against chipping
- Guaranteed adhesion
- Resistant to wear, abrasion, penetration and puncture
- Withstands movement without distortion or failure

DXJ



H	W	PRODUCT CODE
Varies	3/8"	DXJ (H) (Color)

TILE THICKNESS		PRODUCT CODE
5/16"	8mm	DXJ 1132
3/8"	9mm	DXJ 38
7/16"	10mm	DXJ 716
1/2"	12mm	DXJ 12
5/8"	15mm	DXJ 58
3/4"	20mm	DXJ 34



Grout and Caulk: Perfect Couple

To keep color continuity in the floor, we keep a current library of all manufacturer's grout chips. Once we know the grout color, we match it to our 40 standard/300 custom caulk colors, making your floor look consistent and perform flawlessly.



CTC Expansion Joint is available in 94" lengths.

WE
DISTRIBUTE
FOR



OUR PARTNERS

This is only a part of our "library" but it is the biggest part. We are lucky to have the industry's giants backing us up, so we can back our customers up.



OUR MEMBERSHIPS

Our membership to these flooring associations is proof of our commitment to knowledge, and our reliability as your resource for continued success.

WE
BELONG
TO



800.236.5230

ceramictool.com

ctc@ceramictool.com

W237N2872 Woodgate Road • Pewaukee, WI 53072