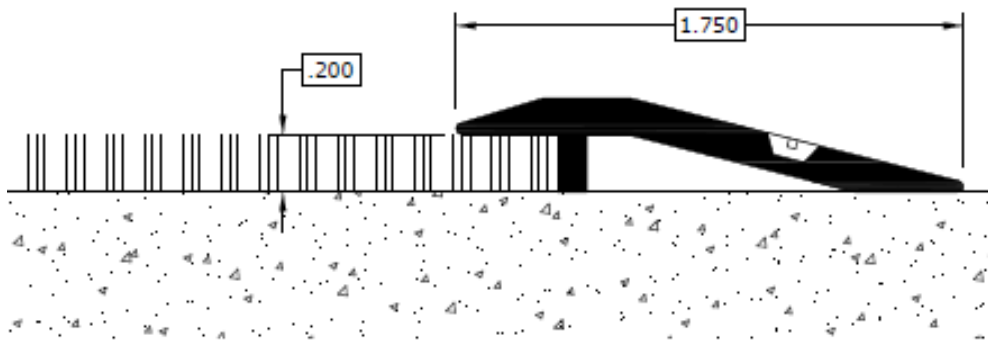


## CTC 316 Reducer

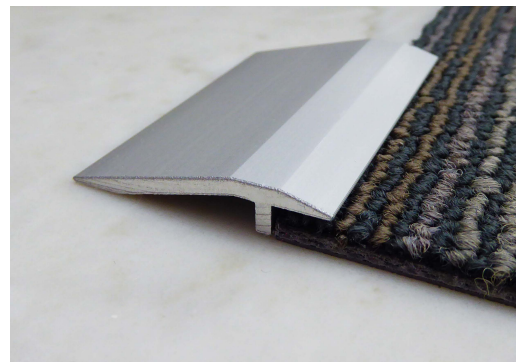
3/16" x 1 3/4" - Reducer

- Meets ADA guidelines.
- Protects edge of flooring with anodized aluminum overhang.
- Can be used with vinyl, tile or carpet to concrete application.
- Available in three varied bronze anodized finishes as well as a matte black finish.



### Installation Instructions

- Butt transition against flooring allowing overhang for edge protection.
- Anchor by method of drill and countersink at pre-drilled holes or gluing down.
  - Use adhesive at both flooring levels if installing the No Hole version.
  - Screws can be drilled in at an angle, or straight down.
  - Hilti fasteners are provided with product.

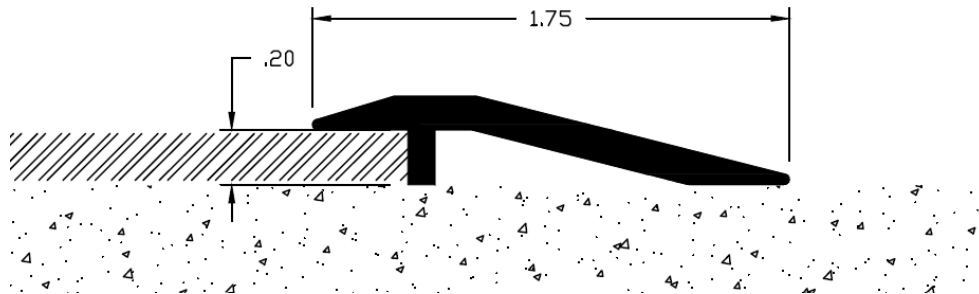


## CTC 316 Reducer

### NO HOLES VERSION

3/16" x 1 3/4" - Reducer

- Meets ADA guidelines.
- Protects edge of flooring with anodized aluminum overhang.
- Can be used with vinyl, tile or carpet to concrete application.
- Available in three varied bronze anodized finishes as well as a matte black finish.



### Installation Instructions

- Butt transition against flooring allowing overhang for edge protection.
- Anchor by method of drill and countersink at pre-drilled holes or gluing down.
  - Use adhesive at both flooring levels if installing the No Hole version.
  - Make sure you are using a construction adhesive appropriate for the flooring and anodized aluminum.

