

E S T

1 9 8 4

# CERAMIC TOOL COMPANY

SOLUTIONS WITH METAL TRIM

[www.ceramictool.com](http://www.ceramictool.com)

800-236-5230

# CERAMIC TOOL COMPANY

Ceramic Tool Company manufactures a line of metal transition strips for a variety of flooring applications. Since 1984 CTC has been known for quality products and exceptional customer service. Our experience in the industry and extensive list of distributed products allows us to find the exact material you need.

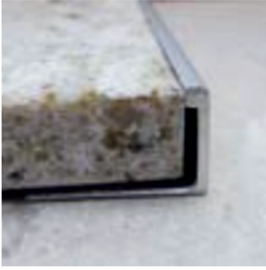
---

## ANODIZING

Anodizing is a process which thickens the natural oxide on aluminum. A direct electrical current is passed through a bath of sulfuric acid, producing a film that resists scratches and basic wear and tear.



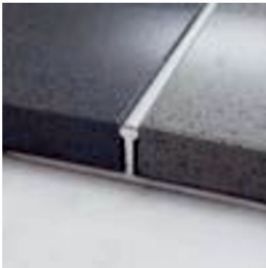
# HARD SURFACE TRIMS



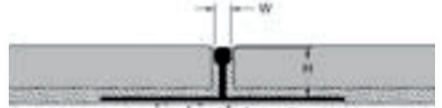
## EDGE



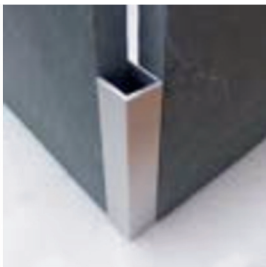
H	W	Product Code
1/4"	1/8"	CTC 14
3/8"	1/8"	CTC 38
7/16"	1/8"	CTC 716
1/2"	1/8"	CTC 12
5/8"	1/8"	CTC 58
3/4"	1/8"	CTC 34
7/8"	1/8"	CTC 78



## T-BAR



H	W	Product Code
3/16"	1/8"	CTC 316 T Bar
3/8"	1/8"	CTC 38 T Bar



## SQ



H	W	Product Code
7/16"	1/2"	CTC 12 SQ

All CTC Products are available in 94" lengths

[www.ceramictool.com](http://www.ceramictool.com)

# CARPET TRIMS



CT



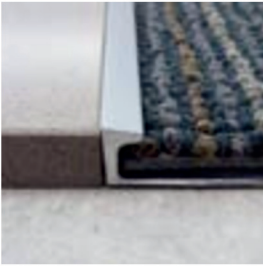
H	W	Product Code
1/4"	1/4"	CTC 14 CT
3/8"	1/4"	CTC 38 CT
7/16"	1/4"	CTC 716 CT
1/2"	1/4"	CTC 12 CT



BCT



H	W	Product Code
1/4"	3/8"	CTC 14 BCT
11/32"	3/8"	CTC 1132 BCT
7/16"	3/8"	CTC 716 BCT



CTB



H	W	Product Code
3/8"	1/4"	CTC 38 CTB

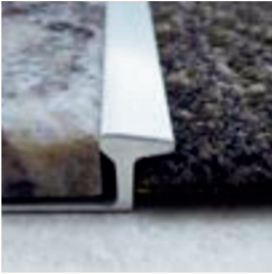


CTV



H	W	Product Code
1/4"	7/16"	CTC 14 CTV

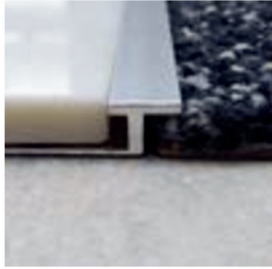
# CARPET TRIMS



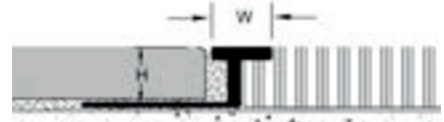
MCT



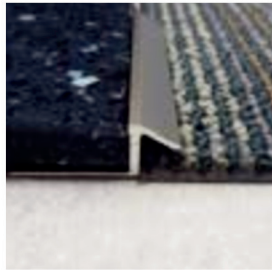
H	W	Product Code
3/8"	3/8"	CTC 38 MCT
7/16"	3/8"	CTC 716 MCT



CAT



H	W	Product Code
1/4"	3/8"	CTC 14 CAT
11/32"	3/8"	CTC 1132 CAT
7/16"	7/16"	CTC 716 CAT



CTS



H	W	Product Code
3/8"	3/8"	CTC 38 CTS
7/16"	3/8"	CTC 716 CTS

All CTC Products are available in 94" lengths

# REDUCERS

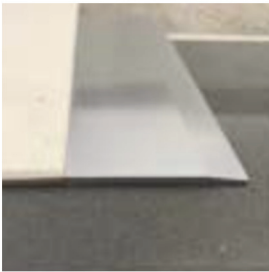


## 316 REDUCER

WITH OR WITHOUT HOLES

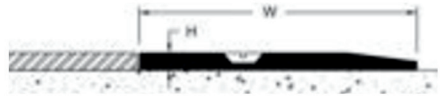


H	W	Product Code
3/16"	1-3/4"	CTC 316 Reducer



## 18 REDUCER

WITH OR WITHOUT HOLES



H	W	Product Code
1/8"	2"	CTC 18 Reducer



## 14 REDUCER

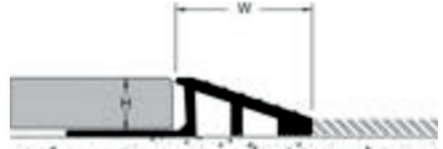


H	W	Product Code
1/4"	1 5/16"	CTC 14 Reducer

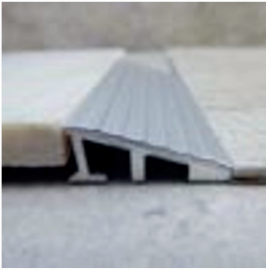
# REDUCERS



## RAMP



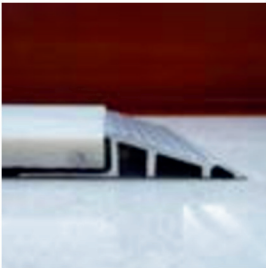
H	W	Product Code
3/8"	1"	CTC RAMP



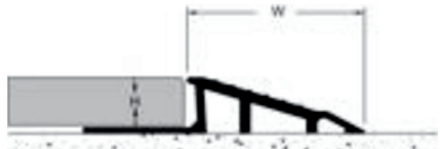
## RAMP XL



H	W	Product Code
3/8"	1"	CTC RAMP XL



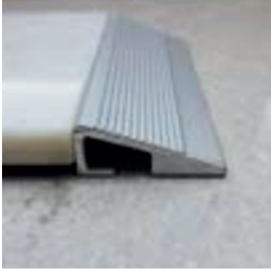
## RAMP XLK



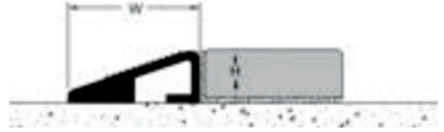
H	W	Product Code
3/8"	1 3/8"	CTC RAMP XLK

All CTC Products are available in 94" lengths

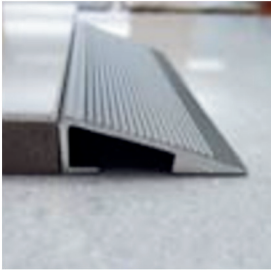
# REDUCERS



TRANZ  
1132



H	W	Product Code
11/32"	1"	CTC TRANZ 1132



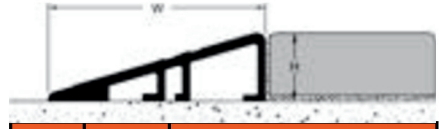
TRANZ  
38



H	W	Product Code
3/8"	1 1/4"	CTC TRANZ 38



TRANZ  
12

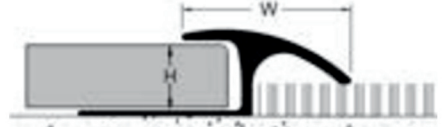


H	W	Product Code
1/2"	1 13/16"	CTC TRANZ 12

# WOOD TRIMS



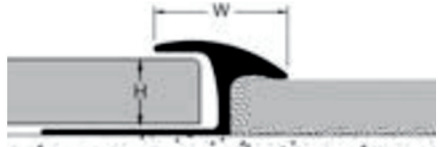
WC



H	W	Product Code
1/2"	1 5/16"	CTC 12 WC

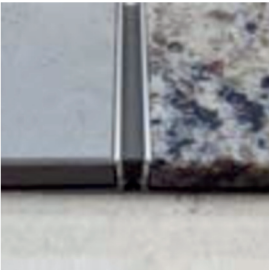


WT

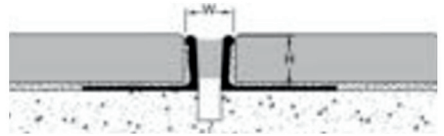


H	W	Product Code
1/2"	15/16"	CTC 12 WT

# EXPANSION JOINT



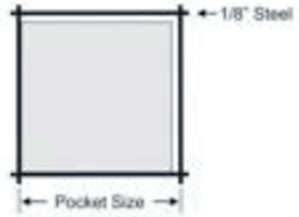
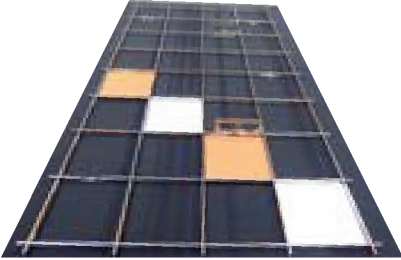
DXJ



H	W	Product Code
11/32"	8 mm	DXJ 1132
3/8"	9 mm	DXJ 38
7/16"	10 mm	DXJ 716
1/2"	12 mm	DXJ 12
5/8"	15 mm	DXJ 58
3/4"	20 mm	DXJ 34

All CTC Products are available in 94" lengths

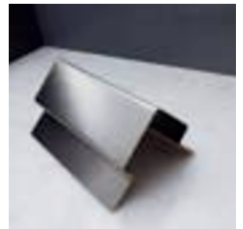
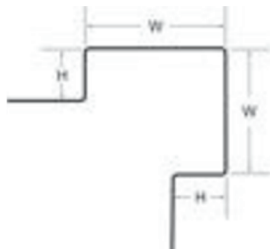
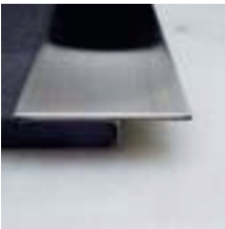
# TILE SETTING FRAMES



Stocked Sizes			
Tile Size	Opening	Grout Size	Item Code
6" x 6"	6-1/16"	3/16"	SJ 65
6" x 6"	6-1/8"	1/4"	SJ 66
Additional sized and layouts available as made-to-order frames. Please call with the tile size and we will quote			

# CUSTOM STAINLESS STEEL

CTC CAN DESIGN AND MANUFACTURE STAINLESS STEEL WALL WRAPS, CORNER GUARDS, T-BARS, CUSTOM ANGLES AND PERIMETER COME IN A VARIETY OF FINISHES.



All CTC Products are available in 94" lengths

# PRODUCTS WE DISTRIBUTE

CALL FOR PRICING

**FRY** REGLET



**NAC**  
NATIONAL APPLIED CONSTRUCTION PRODUCTS



**MANHATTAN AMERICAN  
TERRAZZO STRIP COMPANY**



**Schluter®  
Systems**



**stylmark®**



**NGP**



**PROGRESS®  
PROFILES**



**Genotek**



**profiltec**



**BLANKE**

All CTC Products are available in 94" lengths

# LETS CONNECT

W237N2872 Woodgate Rd

Pewaukee, WI 53072

800-236-5230

[www.ceramictool.com](http://www.ceramictool.com)

[ctc@ceramictool.com](mailto:ctc@ceramictool.com)



Made in the USA